

Using Tools

Online Help

Notices

© Agilent Technologies, Inc. 2001-2009

No part of this manual may be reproduced in any form or by any means (including electronic storage and retrieval or translation into a foreign language) without prior agreement and written consent from Agilent Technologies, Inc. as governed by United States and international copyright laws.

Trademarks

Microsoft®, MS-DOS®, Windows®, Windows 2000®, and Windows XP® are U.S. registered trademarks of Microsoft Corporation.

Adobe®, Acrobat®, and the Acrobat Logo® are trademarks of Adobe Systems Incorporated.

Manual Part Number

Version 03.82.0000

Edition

April 10, 2009

Available in electronic format only

Agilent Technologies, Inc.
1900 Garden of the Gods Road
Colorado Springs, CO 80907 USA

Warranty

The material contained in this document is provided “as is,” and is subject to being changed, without notice, in future editions. Further, to the maximum extent permitted by applicable law, Agilent disclaims all warranties, either express or implied, with regard to this manual and any information contained herein, including but not limited to the implied warranties of merchantability and fitness for a particular purpose. Agilent shall not be liable for errors or for incidental or consequential damages in connection with the furnishing, use, or performance of this document or of any information contained herein. Should Agilent and the user have a separate written agreement with warranty terms covering the material in this document that conflict with these terms, the warranty terms in the separate agreement shall control.

Technology Licenses

The hardware and/or software described in this document are furnished under a license and may be used or copied only in accordance with the terms of such license.

Restricted Rights Legend

If software is for use in the performance of a U.S. Government prime contract or sub-contract, Software is delivered and licensed as “Commercial computer software” as defined in DFAR 252.227-7014 (June 1995), or as a “commercial item” as defined in FAR 2.101(a) or as “Restricted computer software” as defined in FAR 52.227-19 (June 1987) or any equivalent

agency regulation or contract clause. Use, duplication or disclosure of Software is subject to Agilent Technologies’ standard commercial license terms, and non-DOD Departments and Agencies of the U.S. Government will receive no greater than Restricted Rights as defined in FAR 52.227-19(c)(1-2) (June 1987). U.S. Government users will receive no greater than Limited Rights as defined in FAR 52.227-14 (June 1987) or DFAR 252.227-7015 (b)(2) (November 1995), as applicable in any technical data.

Safety Notices

CAUTION

A **CAUTION** notice denotes a hazard. It calls attention to an operating procedure, practice, or the like that, if not correctly performed or adhered to, could result in damage to the product or loss of important data. Do not proceed beyond a **CAUTION** notice until the indicated conditions are fully understood and met.

WARNING

A **WARNING** notice denotes a hazard. It calls attention to an operating procedure, practice, or the like that, if not correctly performed or adhered to, could result in personal injury or death. Do not proceed beyond a **WARNING** notice until the indicated conditions are fully understood and met.

Using Tools—At a Glance

The tools accessed through the **Tools** menu allow you to process captured data before you view it.

Some tools are supplied with the logic analyzer. Other tools can be purchased from Agilent or from other companies.

- To install a tool (see [page 7](#))

Some of the tools you are likely to use include:

- Filter/Colorize Tool (see [page 13](#))
- Inverse Assembly Tools (see [page 9](#))
- Bus Analysis Tools (see [page 11](#))
- "Using the Serial To Parallel Tool" (in the online help)
- "Using the Signal Extractor Tool" (in the online help)
- "Using the Signal Inserter Tool" (in the online help)

- See Also**
- To develop your own tools (see [page 41](#))

Contents

Using Tools—At a Glance 3

1 To install a tool

2 Using Inverse Assembler Tools

3 Using Bus Analysis Tools

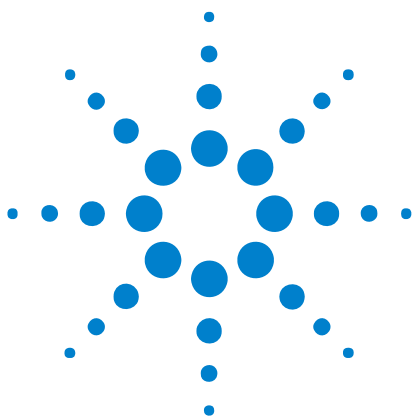
4 Using the Filter/Colorize Tool

- To add a new Filter/Colorize tool 14
- To specify bus/signal patterns to filter 16
- To specify packet patterns to filter 19
- To insert or delete pattern events 23
- To insert or delete filter clauses 24
- To name filter clauses 27
- To disable or enable filter clauses 28
- To change the "across all data" option 29
- To store favorite Filter/Colorize tool setups 32
- To recall favorite Filter/Colorize tool setups 33
- To delete favorite Filter/Colorize tool setups 34
- To disable or enable a Filter/Colorize tool 35
- To rename a Filter/Colorize tool 36
- To delete a Filter/Colorize tool 37
- The Filter/Colorize Tool vs. Filtering in the Trigger 38

5 Using the Packet Decoder Tool

6 To develop your own tools

Index



1 To install a tool

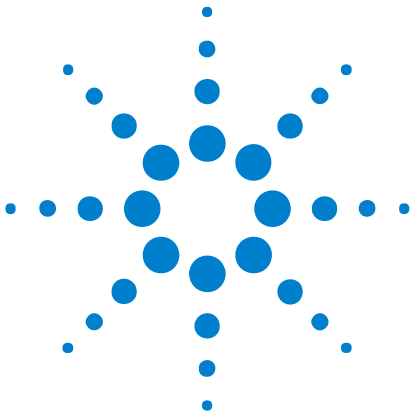
- 1 To install a new tool, run the setup program on the tool's installation CD-ROM by selecting **Start>Settings>Control Panel>Add/Remove Programs**.
- 2 Once the files have been installed, you may need to "license" (in the online help) the tool.
- 3 To use the new tool in a measurement, "add" (in the online help) it to the measurement configuration.

If you ordered the tool with your Agilent Technologies logic analyzer, the tool should already be installed and licensed.

- See Also**
- "To install a program from a CD-ROM" in the Windows help
 - "To activate software licenses" (in the online help)
 - "To add, duplicate, or delete windows and tools" (in the online help)



1 To install a tool



2 Using Inverse Assembler Tools

Inverse assembler tools help you view captured bus activity as assembly language mnemonics.

To use an inverse assembler, you will usually need to:

- 1 Design logic analyzer connectors into your target system, or use an analysis probe.
- 2 Install (see [page 7](#)) and "license" (in the online help) the inverse assembler software.
- 3 Load a configuration. The configuration sets up buses and signals, adds an inverse assembly and a filter/colorize tool, and defines symbols.
- 4 Configure the inverse assembler to work with your target system.
- 5 Capture and view your data.

Inverse assembly tools lock the buses and signals that they use to create the mnemonics. Locked buses and signals cannot be deleted or renamed, although they can be turned off in the viewers. A locked bus or signal has a gray icon to the left of the name instead of a red one.

Inverse assembler tool online help is installed with the tool.

"ARM Inverse Assembler" (in the online help)

"Freescale MXC Memory Bus Decoder" (in the online help)

"Arm11 ETM Decoder" (in the online help)

"Freescale StarCore140/3400 Nexus Decoder and Inverse Assembler" (in the online help)

"ARM AHB Inverse Assembler" (in the online help)

"ARM7/9 ETM Inverse Assembler" (in the online help)

"Motorola 6833x/7x Inverse Assembler" (in the online help)

"Pentium® 4/Xeon®; Transaction Tracker" (in the online help)

"Intel 80486 Inverse Assembler" (in the online help)

"Itanium® 2 Transaction Tracker" (in the online help)

"IBM PowerPC 405 Inverse Assembler" (in the online help)



"Low Pin Count Bus Decoder" (in the online help)

"Freescale M-CORE Nexus Decoder and Inverse Assembler" (in the online help)

"Xilinx MicroBlaze 4 Inverse Assembler" (in the online help)

"Xilinx MicroBlaze 5 Inverse Assembler" (in the online help)

"Motorola MPC74xx 60xbus Inverse Assembler" (in the online help)

"Motorola MPC74xx MPXbus Inverse Assembler" (in the online help)

"Freescale MPC555 Inverse Assembler" (in the online help)

"Motorola PowerQUICC II (MPC8260) Inverse Assembler" (in the online help)

"SDRAM Decoder" (in the online help)

"Motorola PowerQUICC III (MPC85xx) GPCM Inverse Assembler" (in the online help)

"Motorola PowerQUICC III (MPC85xx) DDR Inverse Assembler" (in the online help)

"Motorola PowerQUICC (MPC8XX) Inverse Assembler" (in the online help)

"PowerPC 6xx/7xx Inverse Assembler" (in the online help)

"IBM PowerPC 405 Trace Port Decoder and Inverse Assembler" (in the online help)

NOTE

You may find help for additional inverse assembler tools by clicking on the Contents tab on the left side of this window, and then expanding Using Tools and Using Inverse Assembler Tools (by clicking their "+"). Help for inverse assemblers from other companies is listed under the company name.

- See Also**
- To install a tool (see [page 7](#))
 - "To add, duplicate, or delete windows and tools" (in the online help)
 - "Setting Up Symbols" (in the online help)

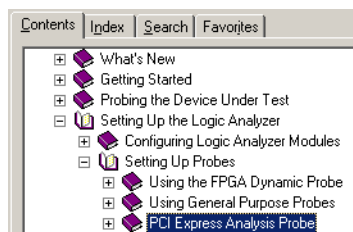


3 Using Bus Analysis Tools

Bus analysis tools help you interpret bus activity in terms of network or bus protocols.

NOTE

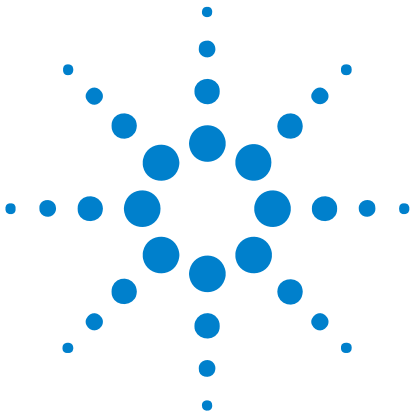
Help for any bus analysis tools which have been installed on your logic analyzer can be found by selecting **Help>Help On Probes** from the menu bar, or in the Contents tab of this help window, under Setting Up the Logic Analyzer:



See Also • Using the Packet Decoder Tool (see [page 39](#))



3 Using Bus Analysis Tools



4 Using the Filter/Colorize Tool

The Filter/Colorize tool lets you show, hide, or color certain samples from a data acquisition module or tool before they are passed on to a display window (for example, Waveform, Listing, etc.) or another tool.

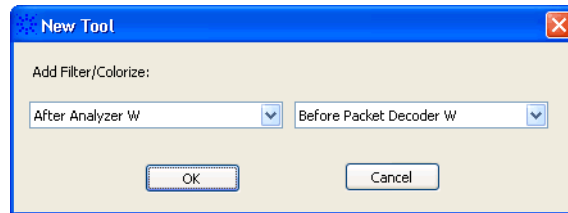
- To add a new Filter/Colorize tool (see [page 14](#))
- To specify bus/signal patterns to filter (see [page 16](#))
- To specify packet patterns to filter (see [page 19](#))
- To insert or delete pattern events (see [page 23](#))
- To insert or delete filter clauses (see [page 24](#))
- To name filter clauses (see [page 27](#))
- To disable or enable filter clauses (see [page 28](#))
- To change the "across all data" option (see [page 29](#))
- To store favorite Filter/Colorize tool setups (see [page 32](#))
- To recall favorite Filter/Colorize tool setups (see [page 33](#))
- To delete favorite Filter/Colorize tool setups (see [page 34](#))
- To disable or enable a Filter/Colorize tool (see [page 35](#))
- To rename a Filter/Colorize tool (see [page 36](#))
- To delete a Filter/Colorize tool (see [page 37](#))

See Also • The Filter/Colorize Tool vs. Filtering in the Trigger (see [page 38](#))

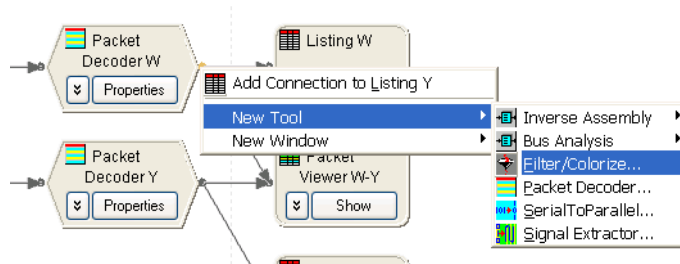


To add a new Filter/Colorize tool

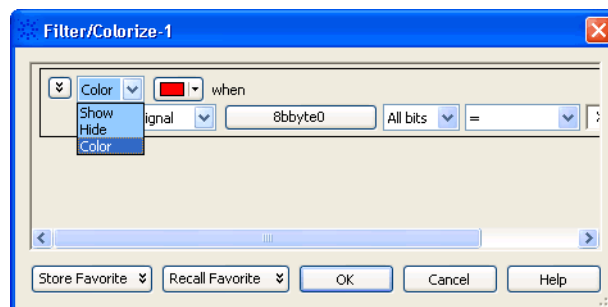
- 1 From the *Agilent Logic Analyzer* application's main menu, select **Tools>New Filter/Colorize...**, specify its location in the New Tool dialog, and click **OK**:



Or, in the Overview window, right-click at the location you want to add the the tool and choose **New Tool>Filter/Colorize...**:



- 2 In the Filter/Colorize dialog, select the type of filter:



You can choose to **Show**, **Hide**, or **Color** the samples that match the bus/signal pattern(s).

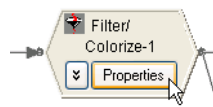
- 3 Specify the bus/signal pattern (see [page 16](#)) or packet pattern (see [page 19](#)) to filter.
- 4 Click **OK** to apply the filter.

See Also • To insert or delete pattern events (see [page 23](#))

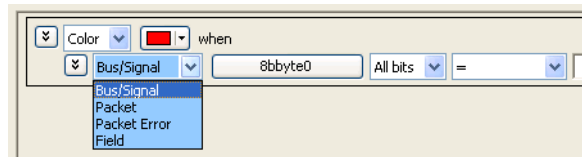
- To insert or delete filter clauses (see [page 24](#))
- To name filter clauses (see [page 27](#))
- To disable or enable filter clauses (see [page 28](#))
- To store favorite Filter/Colorize tool setups (see [page 32](#))
- To recall favorite Filter/Colorize tool setups (see [page 33](#))
- To delete favorite Filter/Colorize tool setups (see [page 34](#))
- To disable or enable a Filter/Colorize tool (see [page 35](#))
- To rename a Filter/Colorize tool (see [page 36](#))
- To delete a Filter/Colorize tool (see [page 37](#))

To specify bus/signal patterns to filter

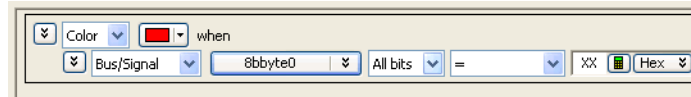
- 1 Open the Filter/Colorize tool's properties dialog by choosing **Tools>(Filter/Colorize tool)>Properties** or by clicking the tool's **Properties** button in the Overview window:




- 2 In the Filter/Colorize dialog, select the **Bus/Signal** pattern type.

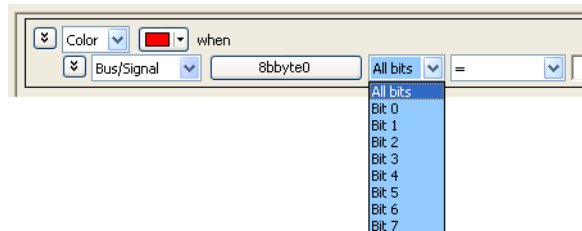


- 3 Select the bus or signal.



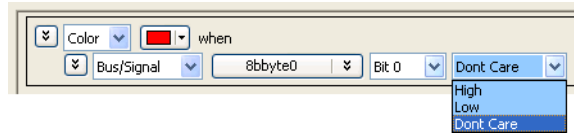
Clicking  lets you select from recently used bus/signal names. Clicking elsewhere on a bus/signal name button opens a Select dialog for selecting a different name.

- 4 If a bus has been selected, either select **All bits** on the bus or select an individual bit.



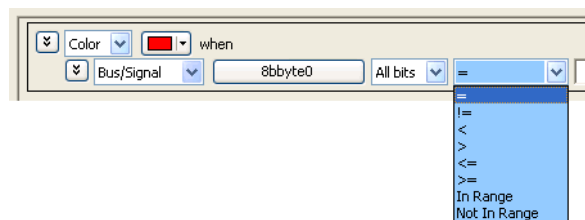
- 5 Specify the bus/signal value:

If a signal or one bit of a bus has been selected, select the signal pattern value (**High**, **Low**, or **Dont Care**).

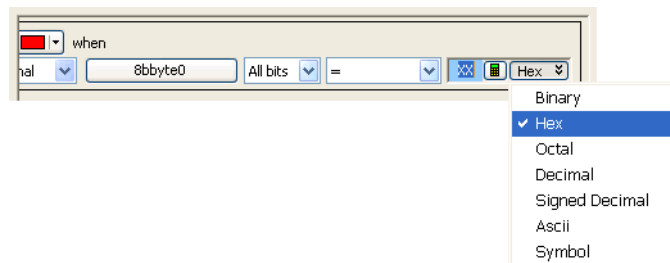


If all bits of a bus have been selected:

- a Select one of the operators: = (equal to), != (not equal to), < (less than), > (greater than), <= (less than or equal to), >= (greater than or equal to), **In Range**, or **Not In Range**.



- b Select the number base (**Binary**, **Hex**, **Octal**, **Decimal**, **Signed Decimal**, also known as two's complement, **Ascii**, or **Symbol**).



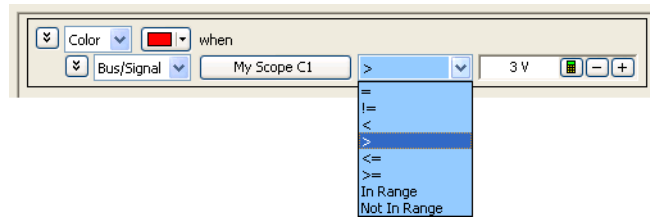
- c Enter the pattern value(s).

When the **Symbol** number base is selected, you use the "Select Symbol dialog" (in the online help) to specify the pattern values.

4 Using the Filter/Colorize Tool

If an analog signal has been selected:

- a Select one of the operators: = (equal to), != (not equal to), < (less than), > (greater than), <= (less than or equal to), >= (greater than or equal to), **In Range**, or **Not In Range**.

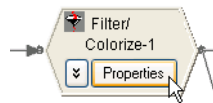


- b Enter the voltage value(s).

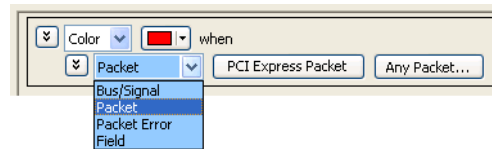
See Also • To insert or delete pattern events (see [page 23](#))

To specify packet patterns to filter

- 1 Open the Filter/Colorize tool's properties dialog by choosing **Tools>(Filter/Colorize tool)>Properties** or by clicking the tool's **Properties** button in the Overview window:



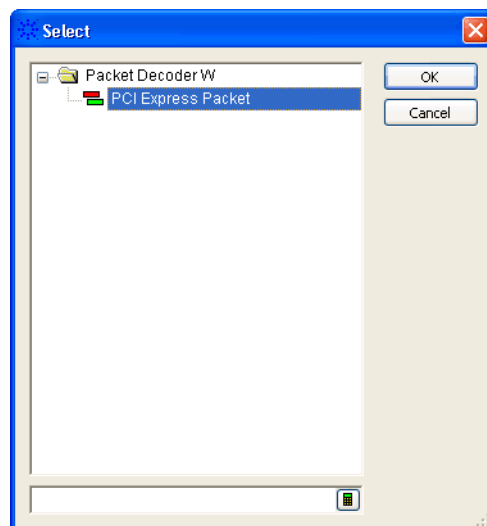
- 2 In the Filter/Colorize dialog, select the **Packet**, **Packet Error**, or **Field** pattern type.



- For the Packet pattern type ... (see [page 19](#))
- For the Packet Error pattern type ... (see [page 20](#))
- For the Field pattern type ... (see [page 21](#))

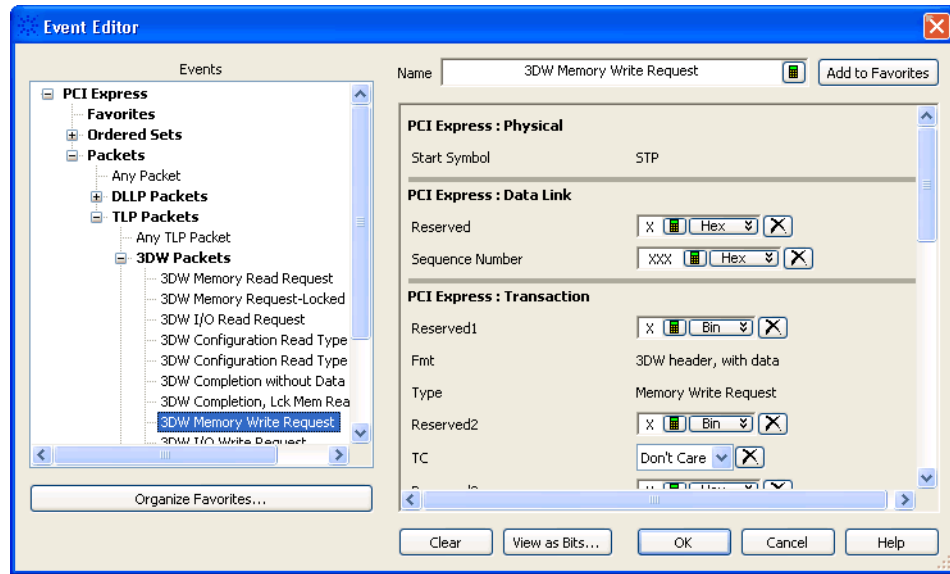
For the Packet pattern type ...

- 1 You can click packet type button to open a selection dialog.



- 2 Click the packet event button to open the Event Editor dialog.

4 Using the Filter/Colorize Tool

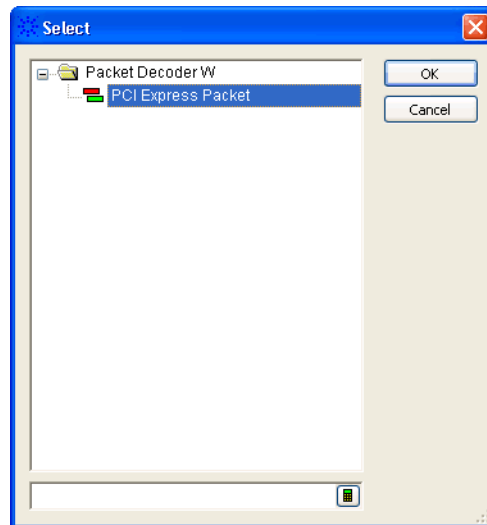


For more information, see "Using the Packet Event Editor" (in the online help)

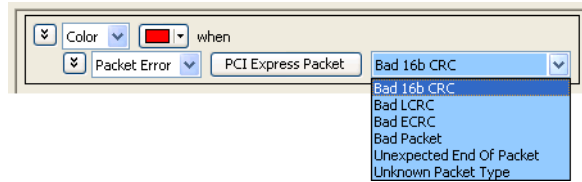
For the Packet Error pattern type

...

- 1 You can click packet type button to open a selection dialog.



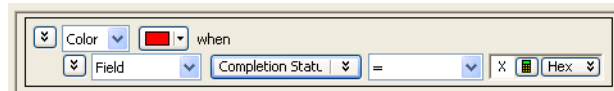
- 2 Select the packet error value:




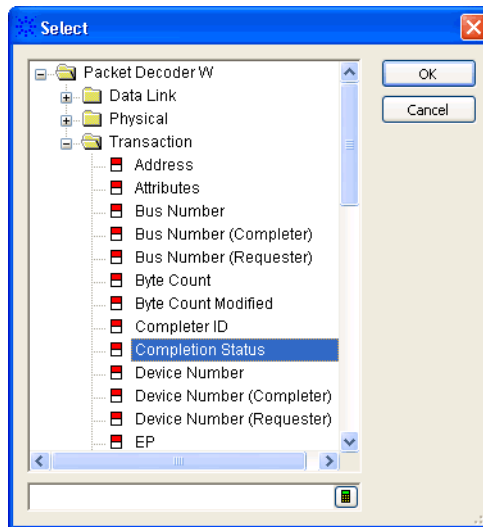
For the Field pattern type ...

1

Select the field name.

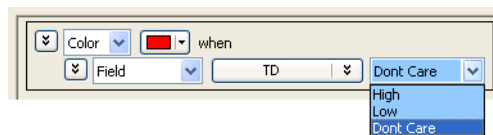


Clicking  lets you select from recently used field names. Clicking elsewhere on a field name button opens a Select dialog for selecting a different name.



2 Specify the field value:

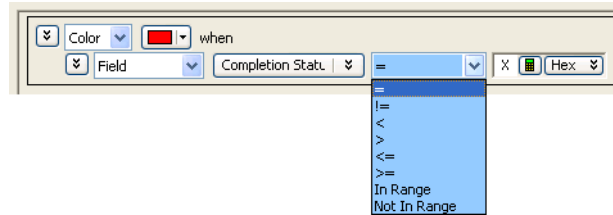
If a single-bit field has been selected, select the signal pattern value (**High**, **Low**, or **Dont Care**).



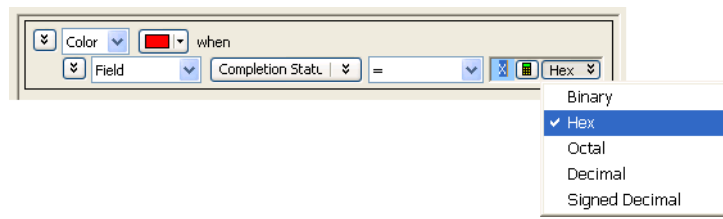
4 Using the Filter/Colorize Tool

If a multiple-bit field has been selected:

- a Select one of the operators: = (equal to), != (not equal to), < (less than), > (greater than), <= (less than or equal to), >= (greater than or equal to), **In Range**, or **Not In Range**.



- b Select the number base (**Binary**, **Hex**, **Octal**, **Decimal**, or **Signed Decimal**, also known as two's complement).

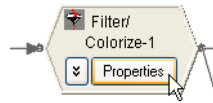



- c Enter the pattern value(s).

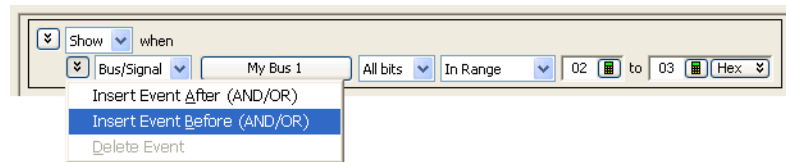
See Also • To insert or delete pattern events (see [page 23](#))

To insert or delete pattern events

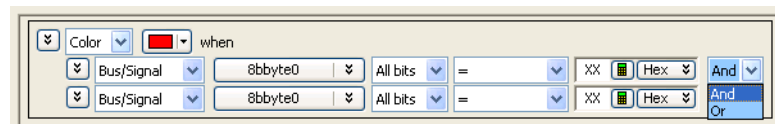
- 1 Open the Filter/Colorize tool's properties dialog by choosing **Tools>(Filter/Colorize tool)>Properties** or by clicking the tool's **Properties** button in the Overview window:



- 2 In the Filter/Colorize dialog, at a pattern event, click the  button associated with an event, and choose **Insert Event After (AND/OR)**, **Insert Event Before (AND/OR)**, or **Delete Event**.



- 3 Specify whether the event should be **And**'ed or **Or**'ed with the other events.



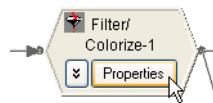
- See Also**
- To specify bus/signal patterns to filter (see [page 16](#))
 - To specify packet patterns to filter (see [page 19](#))


To insert or delete filter clauses

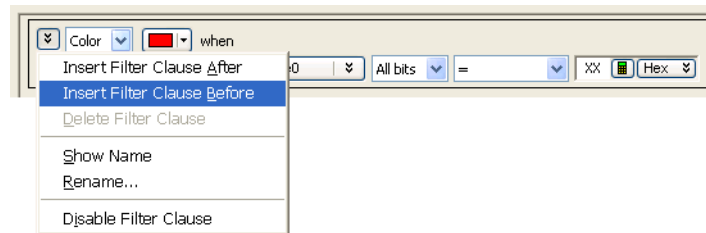
A Filter/Colorize tool can have multiple filter clauses, for example, to use different colors for different samples, to hide or show different samples, or to alternate between different filters. (You can also alternate between different filters by storing (see page 32) and recalling Filter/Colorize tool setups (see page 33) or by enabling/disabling multiple Filter/Colorize tools (see page 35).)

To insert or delete filter clauses:

- 1 Open the Filter/Colorize tool's properties dialog by choosing **Tools>(Filter/Colorize tool)>Properties** or by clicking the tool's **Properties** button in the Overview window:



- 2 In the Filter/Colorize dialog, click the  button associated with a filter clause, and choose **Insert Filter Clause After**, **Insert Filter Clause Before**, or **Delete Filter Clause**.

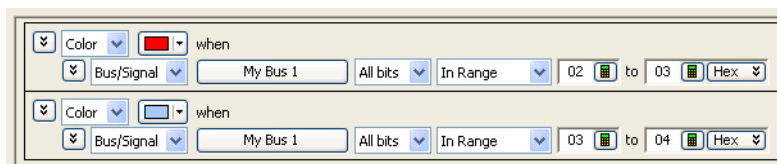


Combining Filter Clauses

When you enable several Color filters, the first filter takes precedence.

Example

This pair of filters:



gives this result:


```

01
02
03
04
05

```

When you enable several Show filters, each filter successively filters the output of the preceding filters.

Example This pair of filters:



gives this result:

```

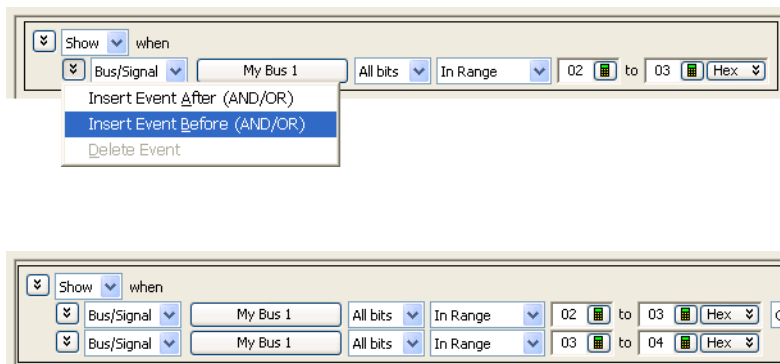
03
03
03
03
03

```

The first filter hides all states except 02 and 03. The second filter hides the 02 states.

To show several ranges in your data, OR them within a single filter as shown in the next example.

Example The pair of filters in the previous example can be entered as two OR'd events in one filter:



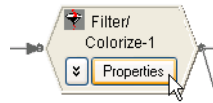
which gives this result:


4 Using the Filter/Colorize Tool

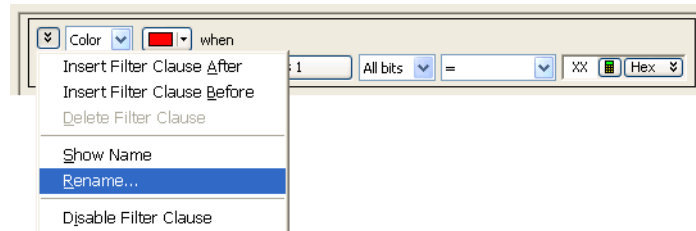
02
03
04
02
03
04

To name filter clauses

- 1 Open the Filter/Colorize tool's properties dialog by choosing **Tools>(Filter/Colorize tool)>Properties** or by clicking the tool's **Properties** button in the Overview window:




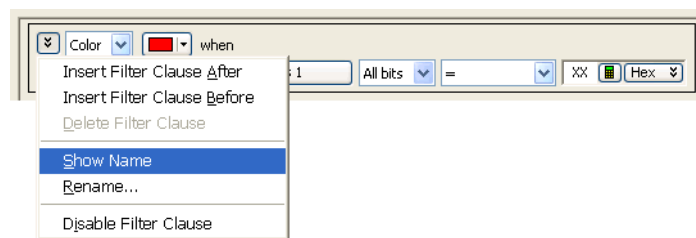
- 2 In the Filter/Colorize dialog, click the  button associated with a filter clause, and choose **Rename...**



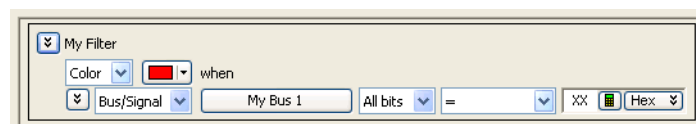
- 3 In the Rename Filter dialog, enter the desired filter clause name, and click **OK**.

To show/hide filter clause names

- 1 In the Filter/Colorize dialog, click the  button associated with a filter clause, and choose **Show Name** or **Hide Name**.



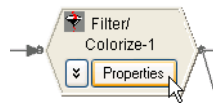
Filter clause names look like:




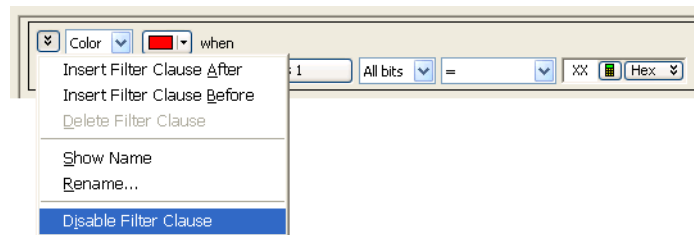
To disable or enable filter clauses

A Filter/Colorize tool can contain multiple filter clauses. You can disable or enable filter clauses to control which filters are applied to your data.

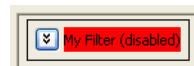
- 1 Open the Filter/Colorize tool's properties dialog by choosing **Tools>(Filter/Colorize tool)>Properties** or by clicking the tool's **Properties** button in the Overview window:



- 2 In the Filter/Colorize dialog, click the  button associated with a filter clause, and choose **Disable Filter Clause** or **Enable Filter Clause**.

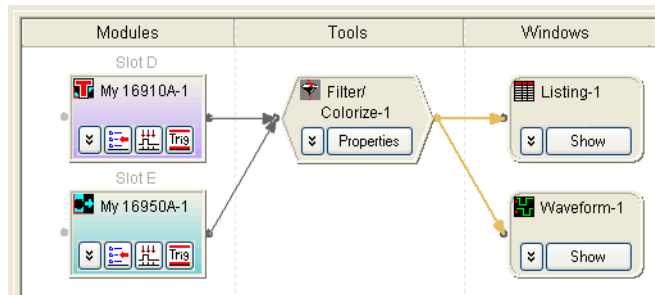


A disabled filter clause looks like:



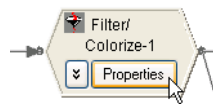
To change the "across all data" option

When there are multiple data sources flowing into the Filter/Colorize tool, the **Filter/Colorize across all data** option specifies how the operation is applied across data sources.

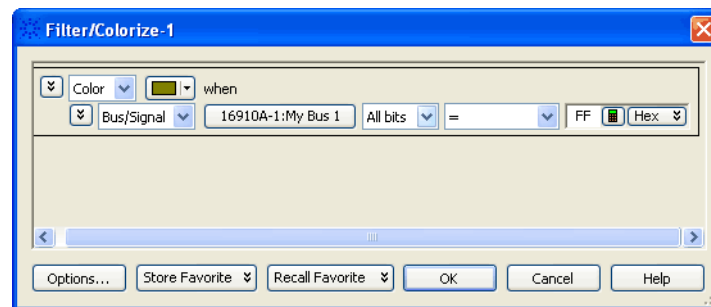


To change the "across all data" option:

- 1 Open the Filter/Colorize tool's properties dialog by choosing **Tools>(Filter/Colorize tool)>Properties** or by clicking the tool's **Properties** button in the Overview window:

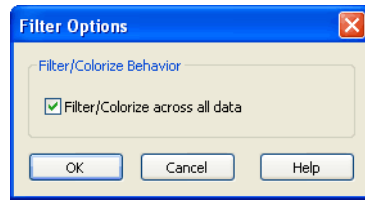


- 2 In the Filter/Colorize dialog, click **Options...**

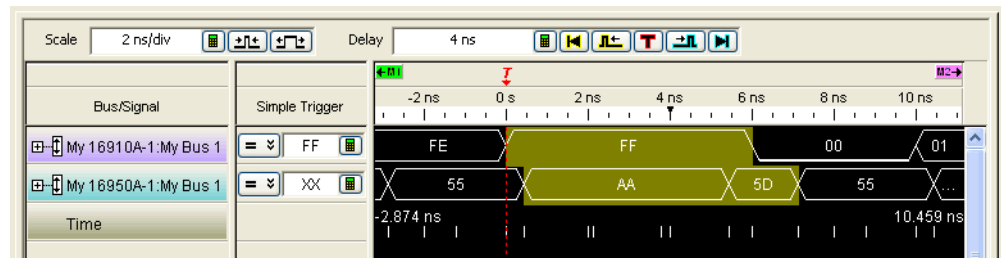


- 3 In the Filter Options dialog, either check or uncheck the **Filter/Colorize across all data** option and click **OK**.

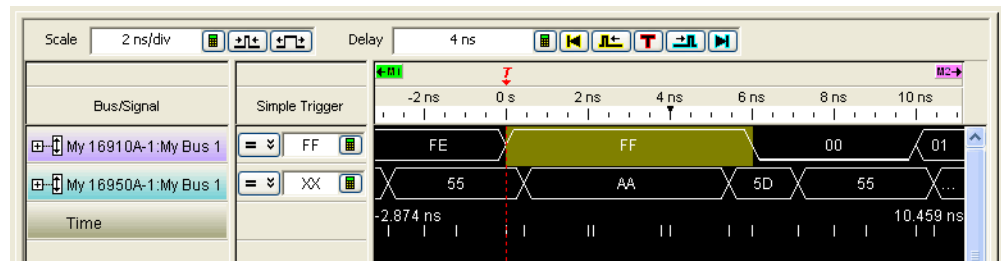
4 Using the Filter/Colorize Tool



When checked, the Filter/Colorize operation spans all data sources:

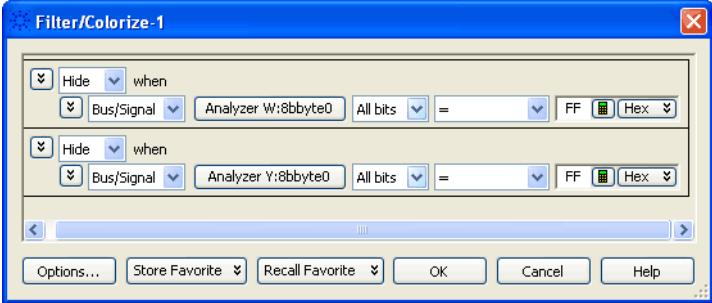


When unchecked, the operation only affects the data sources specified in the Filter/Colorize patterns:



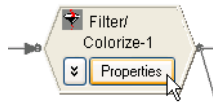
When using multiple buses/signals in an "OR" condition, each bus/signal should be specified as part of its own filter clause. This causes a logical "OR" of filter events and provides for independent filtering between the input data sources. Otherwise, filtering will be applied across all buses/signals in the same filter clause, regardless of which part of the clause satisfies the filter condition.

For example, if you are filtering out whenever the bus 8bbyte0 is FF from either the Analyzer W or Analyzer Y, you should specify the two conditions in separate clauses like so:

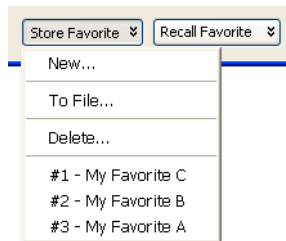


To store favorite Filter/Colorize tool setups

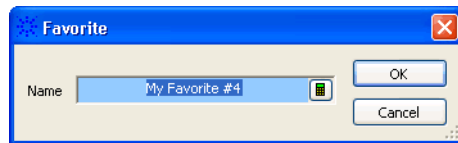
- 1 Open the Filter/Colorize tool's properties dialog by choosing **Tools>(Filter/Colorize tool)>Properties** or by clicking the tool's **Properties** button in the Overview window:



- 2 In the Filter/Colorize dialog, click **Store Favorite**.



- To store as a new favorite, choose **New...**



In the Favorite dialog, enter a name, and click **OK**.

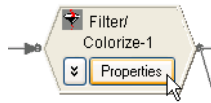
- To store as an XML format file, choose **To File...**. In the Save As dialog, enter a file name, and click **Save**.
- To store over an existing favorite, choose that favorite from the bottom of the menu.

NOTE

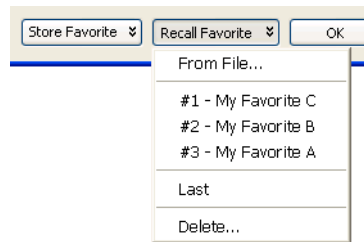
When a Filter/Colorize tool is deleted from the Overview window, any favorites that were created are also deleted.

To recall favorite Filter/Colorize tool setups

- 1 Open the Filter/Colorize tool's properties dialog by choosing **Tools>(Filter/Colorize tool)>Properties** or by clicking the tool's **Properties** button in the Overview window:



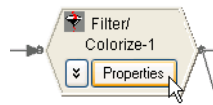
- 2 In the Filter/Colorize dialog, click **Recall Favorite** and select the favorite from the bottom of the menu.



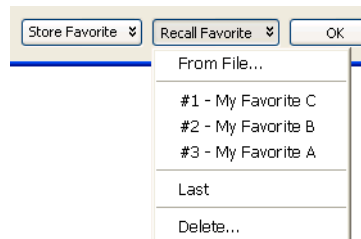
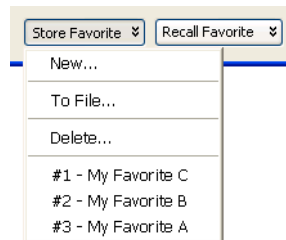
To recall a favorite from an XML format file, choose **From File...** In the Open dialog, enter the file name, and click **Open**.

To delete favorite Filter/Colorize tool setups

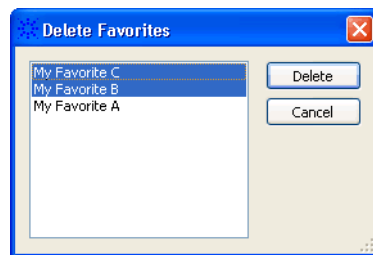
- 1 Open the Filter/Colorize tool's properties dialog by choosing **Tools>(Filter/Colorize tool)>Properties** or by clicking the tool's **Properties** button in the Overview window:



- 2 In the Filter/Colorize dialog, click **Store Favorite** or **Recall Favorite** and choose **Delete...**




- 3 In the Delete Favorites dialog, select the favorites you want to delete; then, click **Delete**.

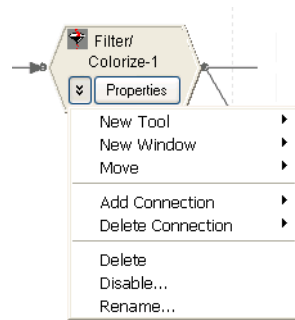


To disable or enable a Filter/Colorize tool

You can use multiple Filter/Colorize tools and disable or enable them to control which filters are applied to your data.


- 1 From the *Agilent Logic Analyzer* application's main menu, choose **Tools>(Filter/Colorize tool)>Disable** or **Tools>(Filter/Colorize tool)>Enable**.

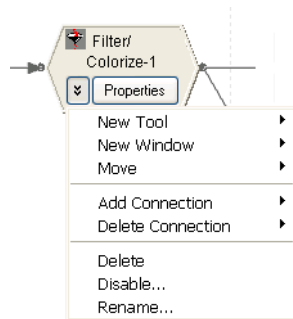
Or, in the Overview window, click the Filter/Colorize tool's  button, and choose **Disable** or **Enable**.



To rename a Filter/Colorize tool

- 1 From the *Agilent Logic Analyzer* application's main menu, choose **Tools>(Filter/Colorize tool)>Rename....**


Or, in the Overview window, click the Filter/Colorize tool's  button, and choose **Rename....**

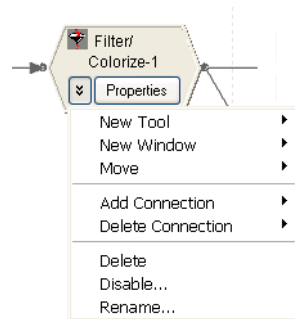


- 2 In the Rename dialog, enter the desired Filter/Colorize tool name and click **OK**.

To delete a Filter/Colorize tool

- 1 From the *Agilent Logic Analyzer* application's main menu, choose **Tools>(Filter/Colorize tool)>Delete**.

Or, in the Overview window, click the Filter/Colorize tool's  button, and choose **Delete**.



The Filter/Colorize Tool vs. Filtering in the Trigger

Both the Filter/Colorize tool and triggers can be used to select which captured samples are displayed. In general, it is best to use the most specific trigger possible; then, use the Filter/Colorize tool to hide, highlight, or explore the captured data.

Advantages of Filtering in the Trigger

- If you use "storage qualification" (in the online help), only the samples you care about are stored. Thus, you can capture data over a longer period of time.
- Triggers can use if/then logic to analyze the relationship between samples in time.

Advantages of the Filter/Colorize Tool

- The Filter/Colorize tool can be used when storage qualification cannot (when the logic analyzer is in "*Full Channel Timing Mode*" (in the online help) or "*Half Channel Timing Mode*" (in the online help)).
- The Filter/Colorize tool can be modified without re-running a measurement. This is useful when you are not sure exactly what you are looking for in the data, or when you are capturing a difficult-to-reproduce event.
- Filter/Colorize tools can be cascaded.
- Filter/Colorize tools can be temporarily disabled so you can see which samples are being filtered out.

See Also

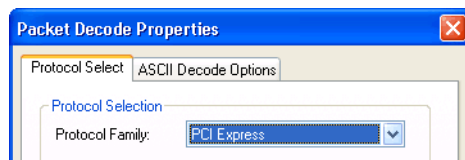
- "Capturing Data from the Device Under Test" (in the online help)

5 Using the Packet Decoder Tool

The Packet Decoder tool is used in conjunction with the bus analysis tools and probes. Loading the configuration file for a probe will automatically set up a Packet Decoder tool. It is also possible to set up a new Packet Decoder tool using the **Tools>New Packet Decoder...** menu item.

Packet Viewer windows are typically used to view information from the Packet Decoder tool (see "Analyzing Packet Data" (in the online help)).

The Packet Decoder tool has these tabs:



- **Protocol Select** – lets you select the protocol to use, along with other information that may affect how the data is decoded (such as the number of lanes or the direction of traffic).
- **ASCII Decode Options** – lets you enable ASCII decode output (if you want to view decode information in Listing windows) and specify related decoding options.

See Also If the analysis probe add-in software is installed, refer to the online help for more information on using the Packet Decoder tool:

"DigRF Acquisition Probe" (in the online help)

"FlexRay Packet Decode" (in the online help)

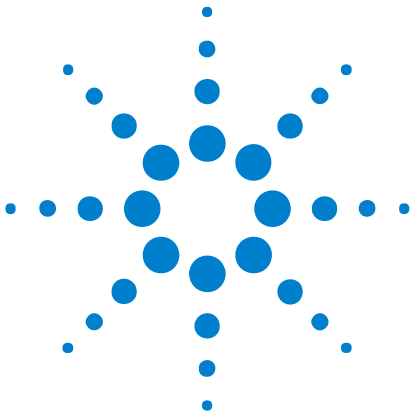
"InfiniBand Analysis Probe" (in the online help)

"PCI Express Analysis Probe" (in the online help)

"Serial ATA/SAS Analysis Probe"



5 Using the Packet Decoder Tool



6 To develop your own tools

The Agilent Logic Analyzer install CD has an *Analysis AddIn Wizard* that helps you develop your own inverse assemblers or analysis tools.

The Analysis AddIn Wizard works with Microsoft Visual Studio .NET.

To install the Analysis AddIn Wizard:

- 1 Browse the Agilent Logic Analyzer install CD.
- 2 Run *SetupAnalysisIAWizard.exe* and follow the instructions to install the proper files.

The files will be installed into the *C:\Program Files\Agilent Technologies\Logic Development\Analysis AddIn Wizard* directory.

- 3 Refer to the documentation in the *docs* subdirectory for more information on using the Analysis API.



6 To develop your own tools

Index

A

across all data, Filter/Colorize option, 29
add Filter/Colorize tool, 14

B

bus analysis tools, 11

C

colorize/filter tool, 13

D

delete favorite Filter/Colorize tool setups, 34
delete Filter/Colorize tool, 37
deleting filter clauses, 24
developing your own tools, 41
disable Filter/Colorize tool, 35
disabling filter clauses, 28
disassembly, 9

E

enable Filter/Colorize tool, 35
enabling filter clauses, 28
events, inserting/deleting in Filter/Colorize tool, 23

F

favorite Filter/Colorize tool setups, deleting, 34
favorite Filter/Colorize tool setups, recalling, 33
favorite Filter/Colorize tool setups, storing, 32
filter clauses, deleting, 24
filter clauses, disabling, 28
filter clauses, enabling, 28
filter clauses, inserting, 24
filter clauses, naming, 27
Filter/Colorize across all data option, 29
Filter/Colorize tool, 13
Filter/Colorize tool setups, deleting favorite, 34
Filter/Colorize tool setups, recalling favorite, 33
Filter/Colorize tool setups, storing favorite, 32
Filter/Colorize tool, adding, 14
Filter/Colorize tool, comparing to triggers, 38
Filter/Colorize tool, deleting, 37
Filter/Colorize tool, disabling, 35
Filter/Colorize tool, enabling, 35
Filter/Colorize tool, renaming, 36

I

inserting filter clauses, 24
install, 7
inverse assembler, 9

M

mnemonics, 9

N

naming filter clauses, 27
notices, 2

P

Packet Decoder tool, 39
packet patterns to filter, 19
pattern events, inserting/deleting in
Filter/Colorize tool, 23
patterns, filtering bus/signal, 16
post-processing, 3

R

recall favorite Filter/Colorize tool setups, 33
rename Filter/Colorize tool, 36

S

storage qualification, comparing to
Filter/Colorize tool, 38
store favorite Filter/Colorize tool setups, 32

T

tool, 3, 7, 9, 13
trademarks, 2
triggers, comparing to Filter/Colorize tool, 38

